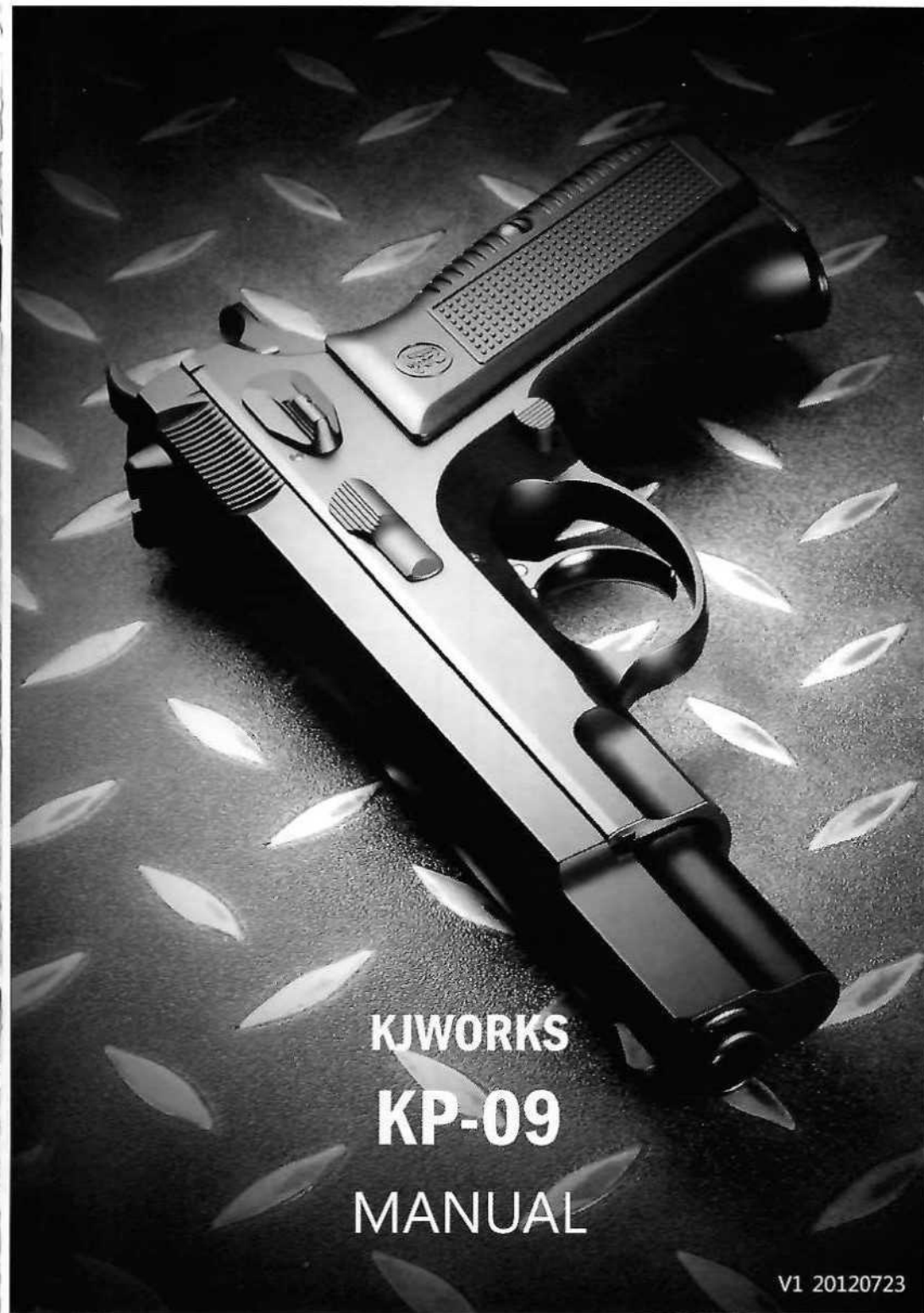


KJWORKS

Kjworks No.12 Lian-Ming 1st Street, Bade City, Taoyuan county, Taiwan
Tel:03-3749793 Fax:03-3618130 e-mail:kjworks@ms47.hinet.net
www.kjworks.com.tw



KJWORKS
KP-09
MANUAL

V1 20120723

WARNING: BEFORE USAGE, THE INSTRUCTION MUSE BE READ.

THANK YOU FOR PURCHASING. THE FOLLOWING ATTENTION POINTS AND INSTRUCTIONS MUST BE READ. SHOOTING WITHOUT CAUTION OR USED IMPROPERLY, BLINDNESS OR INJURIES COULD BE LEAD.



DO NOT POINT AT PEOPLE OR ANIMAL



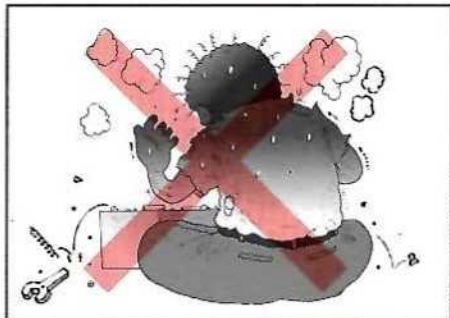
GUN AND GAS MUST NOT BE PLACED IN AREA WHERE TEMPERATURE IS OVER 40 C



PLACE IN GUN CASE WHEN NOT IN USING OR TRANSPORTING



DO NOT USE GAS WHICH PRESSURE IS OVER 12 Kgs/cm²



UNAUTHORIZED RECONSTRUCTION OF AIR SOFT GUN TO STRENGTHEN FIRING FUNCTION IS STRICTLY PROHIBITED.



BE CAREFULL WHAT TARGET YOU SHOOT



EYE PROTECTION DEVICE MUST BE EQUIPPED



DO NOT LOAD ANYTHING BUT BB BULLETS.



DO NOT LOOK THROUGH THE BARREL



PLEASE SHOOT IN SAFE PLACE

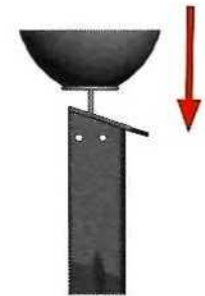
OPERATION

1. REMOVE THE MAGAZINE



PRESS MAGAZINE CATCH AND REMOVE MAGAZINE

2. FILLING GAS



FILL THE GAS BOTTLE TO THE MAGAZINE IN VERTICAL DIRECTOR.

3.LOAD BB



PULL DOWN FOLLOWER AND LOAD BB.

4 INSERT MAGAZINE



5.LOAD



PULL THE SLIDE TO LOAD

6.FIRE



PULL THE TRIGGER

7.SAFE

SAFETY ON



SWITCH TO ON POSITION

SAFETY OFF



SWITCH TO OFF POSITION

DISASSEMBLY

1.PULL BACK SLIDE TO THE POSITION AND TAKE OUT THE SLIDE STOP



2.REMOVE THE SLIDE



3.REMOVE THE RECOIL SPRING AND GUIDE



4.REMOVE THE BARREL

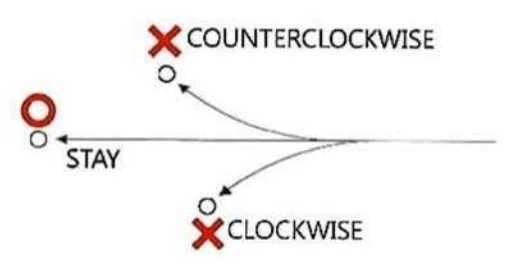


ASSEMBLY

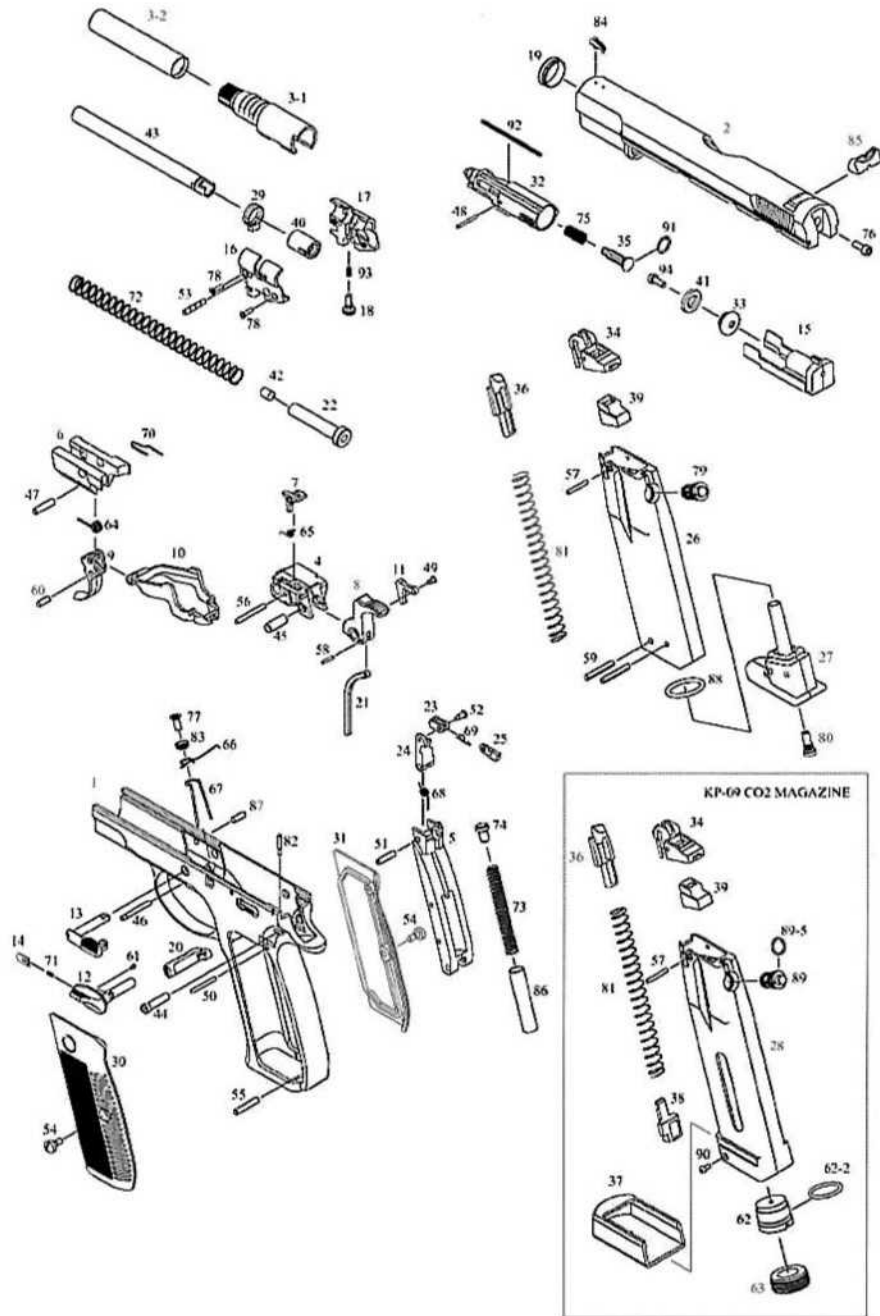
REVERSE THE DISASSEMBLY
ADJUST TREJECTORY



TURN ADJUST SCREW ACCORDING TO THE TREJECTORY



KP-09



20120723

NO.	NAME	PRICE	NO.	NAME	PRICE
1	FRAME	2200	50	VALVE KNOCKER PIN	40
2	SLIDE	1600	51	VALVE KNOCKER SLEEVE	40
3-1	OUT BARREL PART 1	360	52	VALVE HAMMER PIN	40
3-2	OUT BARREL PART 2	360	53	BARREL LOCKING PIN	40
4	HAMMER HOUSING	300	54	GRIP SCREW	40
5	MAIN SP HOUSING	300	55	MAIN SP HOUSING PIN	40
6	TRIGGER HOUSING	300	56	SEAR PIN	40
7	SEAR	80	57	MAG LIP PIN	20
8	HAMMER	300	58	HAMMER SP GUIDE PIN	20
9	TRIGGER	240	59	MAG BOTTOM PIN	20
10	TRIGGER BAR	200	60	TRIGGER BAR PIN	20
11	DISCONNECTOR	100	61	SAFETY PIN	20
12	SAFETY	200	62	MAG STAB (CO2)	100
13	SLIDE STOP	200	62-2	STAB O-RING	20
14	SAFETY DETENT PLUNGER	60	63	MAG BASE NUT (CO2)	100
15	PISTON BLOCK	400	64	TRIGGER SP	30
16	BARREL CHAMBER (L)	160	65	SEAR SP	30
17	BARREL CHAMBER (R)	160	66	TRIGGER BAR SP	30
18	TRAJECTORY ADJUST SCREW	120	67	MAG CATCH SP	30
19	FRONT RING	120	68	VALVE KNOCKER SP	30
20	MAGAZINE CATCH	160	69	VALVE LOCK SP	30
21	MAIN SP STRUT	60	70	SLIDE STOP SP	30
22	RECOIL SP GUIDE	160	71	SAFETY SP	30
23	VALVE HAMMER	120	72	RECOIL SP	60
24	VALVE KNOCKER	240	73	MAIN SP	60
25	VALVE LOCK PLATE	120	74	MAIN SP CAP	40
26	MAG BODY (GAS)	450	75	FLOATING VALVE	20
27	MAG BASE (GAS)	200	76	PISTON BLOCK SCREW	20
28	MAG BODY (CO2)	450	77	MAG CATCH SP SCREW	20
29	TRAJECTORY ADJUST RING	160	78	BARREL CHAMBER SCREW	20
30	GRIP (L)	120	79	EX VALVE	180
31	GRIP (R)	120	80	FILLING VALVE	80
32	CYLINDER	180	81	FOLLOWER SP	60
33	PISTON	40	82	HAMMER PIN DETENT	40
34	MAG LIP	80	83	MAG CATCH SP WASHER	30
35	FLOATING VALVE	30	84	FRONT SIGHT	120
36	MAG FOLLOWER	40	85	REAR SIGHT	150
37	MAG BOTTOM (CO2)	140	86	MAIN SP HOUSING SLEEVE	150
38	MAG BOTTOM STOP (CO2)	30	87	TRIGGER HOUSING PIN	20
39	MAG GASKET	100	88	MAG BOTTOM O-RING	30
40	RUBBER CHAMBER	100	89	CO2 EX VALVE	240
41	PISTON RING	20	89-5	CO2 EX VALVE O-RING(BIG)	20
42	RECOIL BUFFER	30	90	CO2 MAG BOTTOM SP STOP SCREW	20
43	INNER BARREL	240	91	FLOATING VALVE O-RING	20
44	HAMMER PIN	80	92	CYLINDER SP	30
45	HAMMER SLEEVE	60	93	TRAJECTORY ADJUST SCREW	20
46	TRIGGER PIN	60	94	PISTON SCREW	10
47	TRIGGER SLEEVE	60			
48	FLOATING VALVE PIN	30			
49	DISCONNECTOR PIN	30			